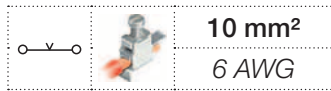
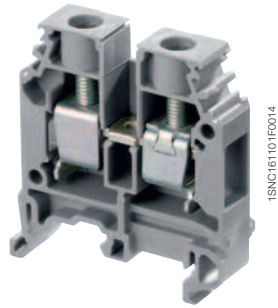


M10/10 screw clamp terminal blocks

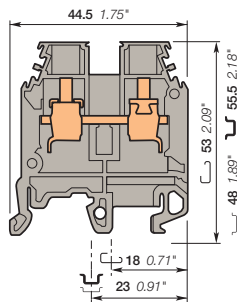
Feed-through - 10 mm 0.394 in spacing



2



M10/10



10 mm 0.394 in spacing

Description

- Flexibility: snap onto symmetrical and asymmetrical rails,
- Many colors are available in addition to our generic grey, to help you quickly identify any of specific functions.

Ordering details

Description	Color	Type	Order code	Pkg pce	Weight (1 pce) g
Feed-through	Grey	M10/10	1SNA115120R1700	50	17.20
	Blue	M10/10.N	1SNA125120R1100	50	17.20
	Yellow	M10/10	1SNA105120R2600	50	17.20
	Red	M10/10	1SNA400189R0400	50	17.20
	White	M10/10	1SNA400190R0100	50	17.20
	Black	M10/10	1SNA400188R0300	50	17.20
	Beige	M10/10	1SNA195120R1000	50	17.20

Main technical data

		IEC	UL	CSA	Mounting instructions	
1 conductor per clamp	Rigid - Solid / Stranded	0.5-16 mm ²	20-6 AWG	22-6 AWG	Rail	G32, TH 35-7.5, TH 35-15
	Flexible with insulated ferrule	0.5-10 mm ²			Wire stripping length	12 mm 0.47 in
	Gauge	B6			Tool	Flat screwdriver Ø 5.5 - 6 mm Ø 0.217 - 0.236 in
					Torque	1.2 - 1.4 N.m 10.6 - 12.4 lb.in
Rated current / Rated cross section		57 A / 10 mm ²	65 A / 6 AWG	70 A / 6 AWG		
Rated short-time withstand current (1s)		1200 A				
Rated voltage		1000 V	600 V	600 V		
Impulse withstand voltage		8000 V				
Protection		IP20	NEMA 1			

The connecting capacity data for one Rigid - Solid / Stranded - Flexible conductor (when apply) is a mandatory information required by IEC, UL and CSA standards.

All other data are provided as supplementary information only. For more details, please consult our CB, UL or CSA certificates and technical datasheet available on <http://www.ABB.com>

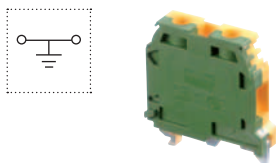
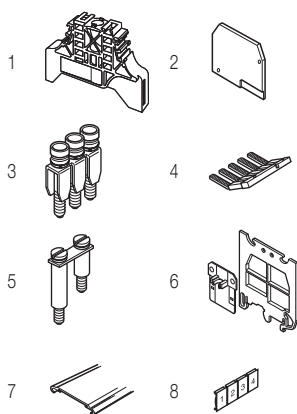


Accessories

Description	Color	Type	Order code	Pkg pce	Weight (1 pce) g	
1 End stops	Grey	BAM2	1SNA206351R1600	50	12.00	
		BADL	1SNA399903R0200	50	4.70	
2 End sections	Grey	FEM6	1SNA118368R1600	20	2.40	
3 Jumper bars	Grey	3 poles 57 A	BJMI10-3	1SNA176676R0500	10	8.00
		4 poles	BJMI10-4	1SNA176677R0600	10	11.00
		5 poles	BJMI10-5	1SNA176678R1700	10	13.00
		10 poles	BJMI10-10	1SNA176679R1000	10	27.00
		10 poles 70 A	PC10-10	1SNA163315R2600	10	
4 Lateral jumper bars	Grey	Universal screw jumper bar kit N ^o I	BJDP1	1SNA179623R0300	10	7.00
		Universal screw jumper bar kit N ^o III	BJDP3	1SNA179625R0500	10	5.00
5 Cross spacing jumpers	Grey	SCM6	1SNA113003R1000	10	0.30	
		SCFM6	1SNA114825R0500	20	4.00	
6 Circuit separators	Grey	SCFCV1-2	1SNA116795R1100	10	8.00	
		SCF6	1SNA118707R0300	20		
		CPV1-2	1SNA176816R1200	1		
7 Protecting covers	Transparent	CPM	1SNA187312R1400	1		
		RC1010	1SNA238000R1600	1	1.30	
8 Terminal block markers	White	Blank card				

Complete list of accessories is indicated in the terminal block datasheet.

Some accessories such as jumper bars may modify the terminal block's ratings: complete information in the accessories catalogue pages.



Ground screw clamp terminal blocks

Description	Color	Type	Order code	Pkg pce	Weight (1 pce) g
Ground Profile aligned with M10/10...	Green-yellow	M10/10.P	1SNA165115R1000	50	29.00

All the technical data for UL/CSA standard and dimensions in inches are in *italics*.

Technical data valid for copper conductors only.